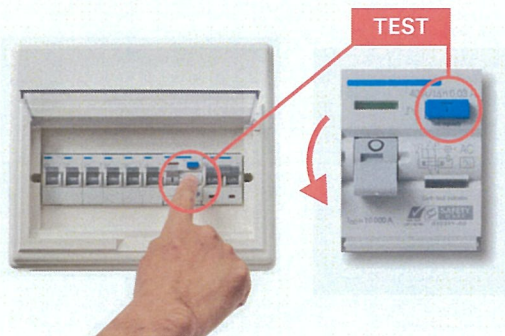


Keep your family safe. 3 steps to test your Residual Current Circuit Breaker.

What is a Residual Current Circuit Breaker (RCCB)?

An RCCB is a safety device that cuts off electricity supply upon detecting electricity leakage in your home. It protects you and your family from electric shocks.

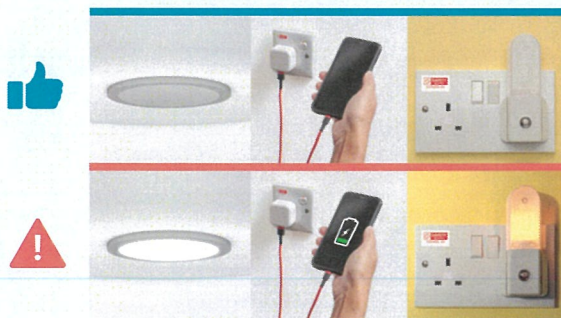
1



Tip: Before testing your RCCB, protect your appliances by switching them off first.

Test the RCCB by pressing the TEST button. The RCCB switch will flip down, cutting off all power supply in your home.

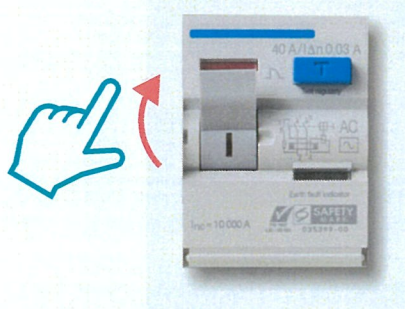
2



Test all light switches and power sockets in every room. The RCCB is working if your lights and appliances do not turn on.

***IMPORTANT:** If any light or power socket continues to work when the RCCB switch is flipped down, your house is not fully protected by the RCCB. Contact a Licensed Electrical Worker immediately.

3



Switch off all lights and power sockets. Flip up the RCCB switch to restore power supply and switch on lights and appliances that you need.

Where can I find my RCCB?

Locate your electrical distribution board box at home. Look for the switch with a test button. This is your RCCB.

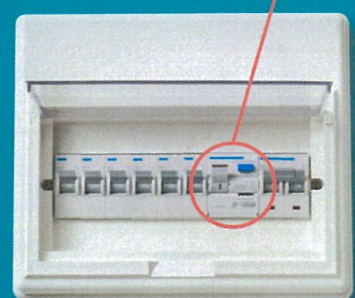
Can't find your RCCB?

For HDB apartments, contact your HDB Branch Service Line at [1800-225-5432](tel:1800-225-5432) or www.hdb.gov.sg/efeedback if you require assistance.



For private housing, please contact a Licensed Electrical Worker by scanning the QR code or visit go.gov.sg/search-elise for assistance.

RCCB



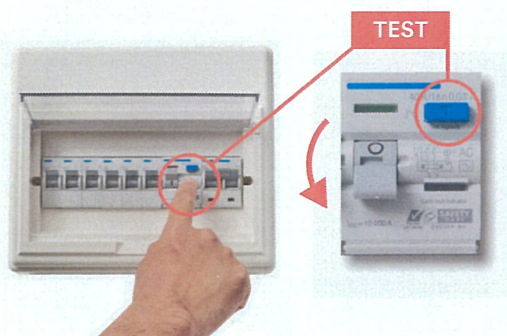
保障家人安全。

3步骤测试家居漏电断路器。

什么是漏电断路器？

漏电断路器是一种安全装置，一旦检测到你家里发生漏电的情况，它就会自动切断电源，以免你和家人触电受伤。

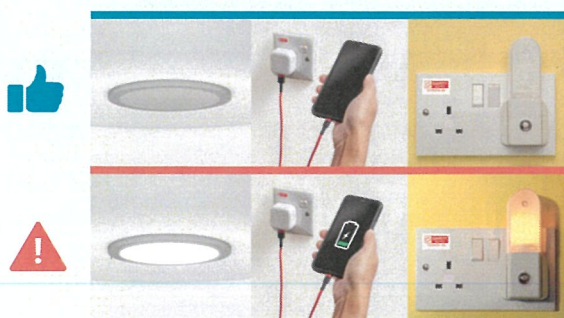
1



提示：测试漏电断路器前，先关掉电器的电源，以保护电器。

按“TEST”(测试)按钮，以测试漏电断路器。漏电断路器将跳闸，切断你家里的所有电源。

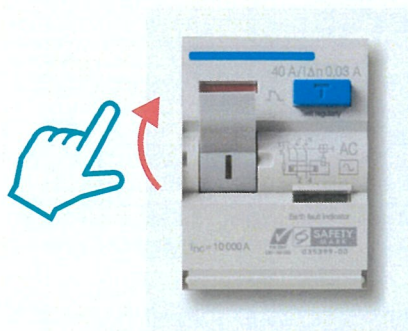
2



检查每个房间的电灯开关和电源插座。如果电灯和电器没有启动，就表示漏电断路器操作正常。

***重要提示：**漏电断路器跳闸后，如果电灯或电源插座仍可启动，就表示漏电断路器出现故障，你和家人的安全没有完全得到保障。请立即联系持牌电工。

3



关掉所有电灯和电源插座。将漏电断路器开关向上推以恢复电源，并开灯和使用电器。

如何找出漏电断路器？

先确认配电箱的位置，然后找出“TEST”(测试)按钮。这就是漏电断路器。

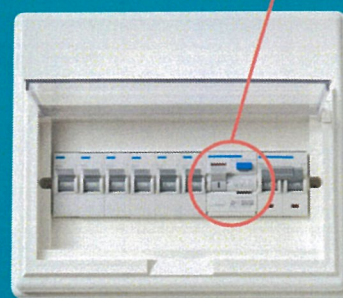
找不到您的漏电断路器？

组屋居民可拨打建屋发展局分行服务热线 **1800-225-5432** 或上网 www.hdb.gov.sg/efeedback 填写电子反馈表格通知我们。



私宅居民可扫描QR码或浏览 go.gov.sg/search-elise 查找持牌电工为您装置漏电断路器。

RCCB



* Unit Electrical Box

* Turn-off this main switch at DB box 15 minutes before major power shutdown at 9 am.

