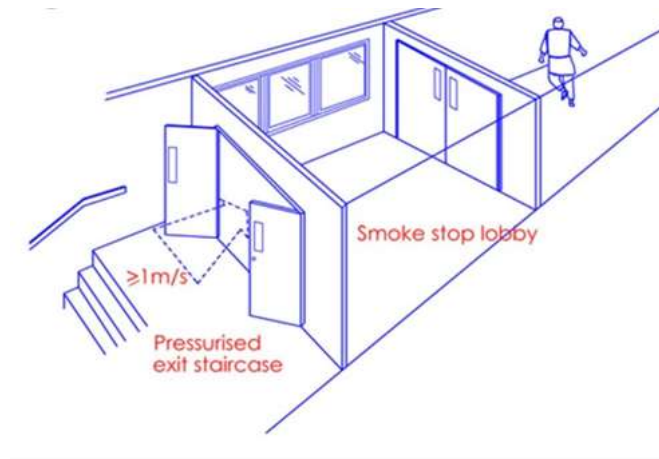


## Fire Safety Awareness

Dear Residents,

During the recent fire safety check, household belongings were found to be placed at along fire evacuation route.

This guideline serves to remind all residents that the common exit facilities (i) part outside unit with open-ended air well ii) exit staircase provide a safe means of escape for occupants from the building during fire outbreak.



Any obstruction on the smoke stop lobby, ventilation outlet or exit doors that lead to the fire staircase can hinder evacuation efforts.

As part of our Eden's community effort to ensure safe living environment, we would like to urge residents to refrain from placement of personal belongings along fire evacuation routes and facilities.

Please free feel to reach out to Building Management Office for any clarification and we will be most glad to assist.

Thank you for understanding and cooperation.

### **Molly Seow**

Building Manager

For and on behalf of **The Subsidiary Management Corporation No.2- Strata Title Plan No. 4677**

11 Stamford Road

#03-01 Eden Residences Capitol

Singapore 178884

Tel: +65 6385 7488 | Fax: +65 6385 7018